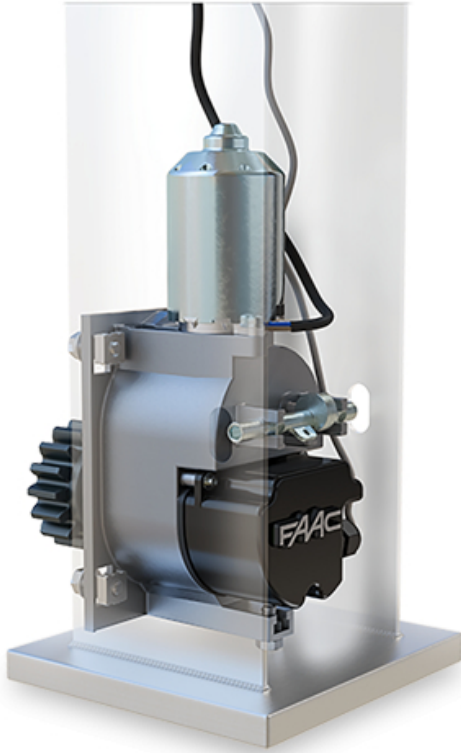


# C4000I



- ✓ leaf speed: 16 m/min
- ✓ maximum leaf width (rail gate): 8 m
- ✓ maximum leaf weight cantilever/rolling: 250 kg / 400 kg
- ✓ post dimensions: 120x120 mm

The compact sliding gate drive C4000I integrates perfectly into the architecture. It supports maximum leaf widths of up to 8 m (rail gate) and leaf weights of up to 400 kg.

Safe use of the drive is ensured by the manufacturer's patented magnetic absolute encoder. It determines the maximum position of the leaf. When an obstacle is detected, the C4000I will independently reverse the direction of the gate leaf.

**DRIVES**